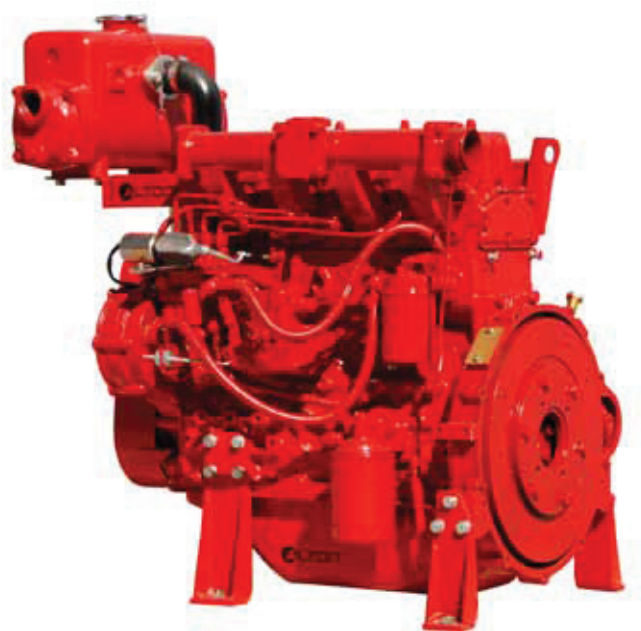




A-490-H

Key Features

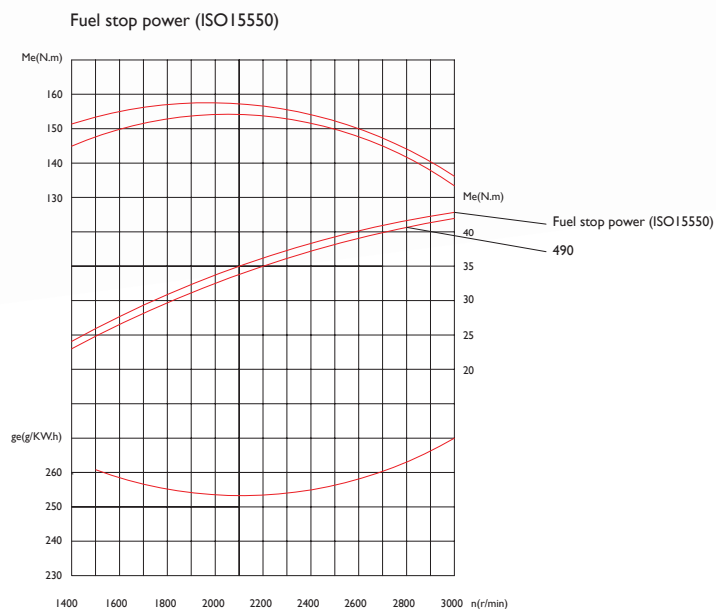
- Air cleaner - weather rated
- Oil pressure sender fitted (19-199ohms)
- Water temperature sender fitted (287-23ohms)
- Stop solenoid
- Painted R13 signal red, UV stabilised
- Easily adjustable throttle control
- Factory tested
- Mounting legs
- Belt covers
- Engine speed magnetic pick-up
- Flywheel drive plate
- Control wiring loom



Specifications

Cooling System	Heat Exchange
Minimum Cooling Water Flow	1.92L/sec @ 20 °C
Air System	Naturally Aspirated
Radiated Heat Load	4.2kW
Air Consumption	4.0m³/min
Exhaust Gas Flow	66.75L/sec
Exhaust Outlet Size	2"
Voltage	12VDC
Fuel Usage at full load	9.8L/hr
Rated Power	42kW
Continuous Power	40kW
Cylinders	4
Net Mass	280kg
Max rpm	3000
3m Sound level @ 3000rpm	102 dBa
Flywheel	SAE#7.5
Bell Housing	SAE#4
Bore and Stroke	90mm x 90mm
Displacement	2.54L
Cranking Amps	350

Performance Curve



*De-rate performance by 5% for radiator version

Power Output Chart

RPM	BHP	kW
1500	31	23
1600	34	25
1700	35	26
1800	38	28
1900	39	29
2000	42	31
2100	43	32
2200	44	33
2300	46	34
2400	47	35
2500	50	37
2600	51	38
2700	52	39
2800	54	40
2900	55	41
3000	55	41

Performance figures shown do not include cooling fan and other parasitic losses. Tolerance +/- 5%.

Schematics

