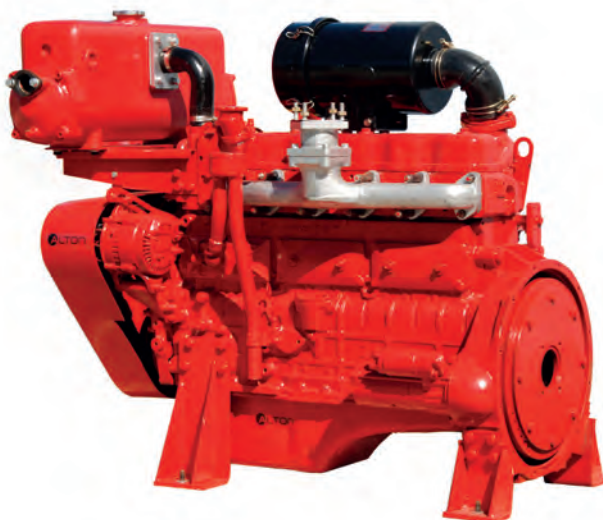




A-6102-BQ-H

Key Features

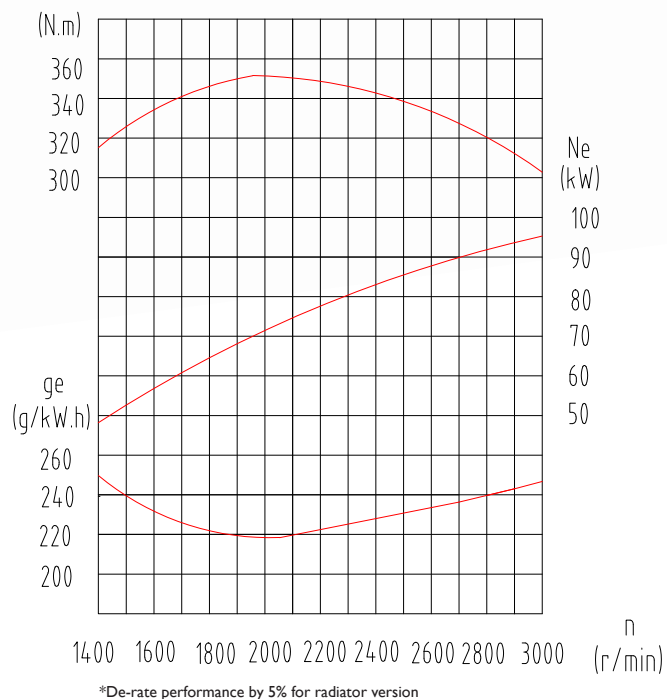
- Air cleaner - weather rated
- Oil pressure sender fitted (19-199ohms)
- Water temperature sender fitted (287-23ohms)
- Stop solenoid
- Painted R13 signal red, UV stabilised
- Easily adjustable throttle control
- Factory tested
- Mounting legs
- Belt covers
- Engine speed magnetic pick-up
- Flywheel drive plate
- Control wiring loom
- 240Vac engine jacket heater fitted
- Exhaust manifold heat shields
- Guards fitted to all rotating parts



Specifications

Cooling System	Heat Exchange
Minimum Cooling Water Flow	4.0L/sec @ 20C
Air System	Naturally Aspirated
Radiated Heat Load	8.1kW
Air Consumption	8.67m ³ /min
Exhaust Gas Flow	429 L/sec
Exhaust Outlet Size	3"
Voltage	24Vdc
Fuel Usage at full load	22.8L/hr
Rated Power	95kW
Continuous Power	90kW
Cylinders	6
Net Mass	495kg
Max rpm	3000
3m Sound level @ 3000rpm	106 dBa
Flywheel	# 11.5 SAE
Bell Housing	# 3 SAE
Bore and Stroke	102mm x 118mm
Displacement	5.785L
Cold Cranking Amps	500

Performance Curve



Power Output Chart

RPM	BHP	kW
2000	102	76
2100	106	79
2200	110	82
2300	114	85
2400	117	87
2500	119	89
2600	121	90
2700	123	92
2800	126	94
2900	127	95
3000	127	95

Performance figures shown do not include cooling fan and other parasitic losses. Tolerance +/- 5%.

Schematics

